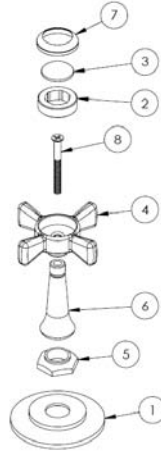
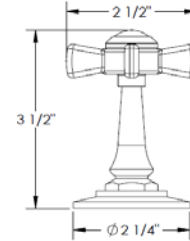


HANDLE TRIMS

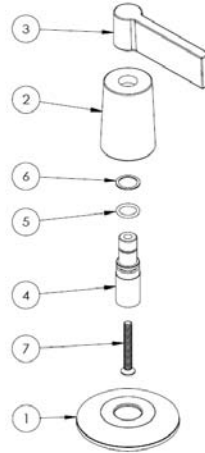
Cipriani (Code: B9)



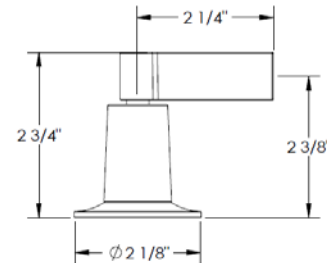
ITEM NO.	PART NUMBER	QTY.
1	B9-ESC	1
2	S1-CAP-ADAP	1
3	X-PRCLN-INSRT-(PLN/COLD/HOT)	1
4	S1-HNDL-(COLD/HOT)	1
5	B9-ESC-NUT	1
6	B9-POST	1
7	B9P-CAP-RING	1
8	CR-FHM1 0.164-32x1.625x1-S	1



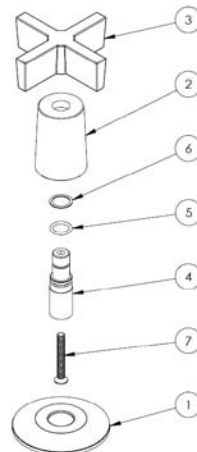
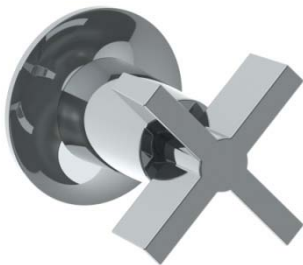
Astaire (Code: DD2)



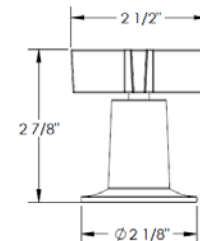
ITEM NO.	PART NUMBER	QTY.
1	DD2-ESC-RING	1
2	DD2-ESC	1
3	SL-LVR	1
4	TR24-STEM	1
5	AS568 - 012	1
6	.497x.391x.02-PLSTC-WSHR	1
7	CR-FHMS 0.164-32x1.25x1.25-S	1



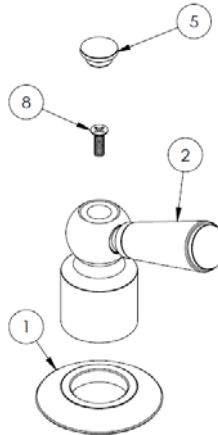
Garbo (Code: DD3)



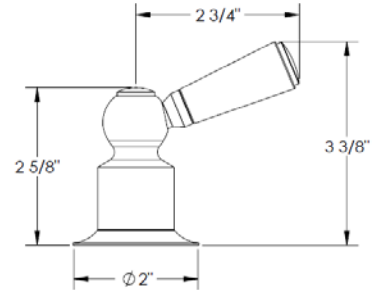
ITEM NO.	PART NUMBER	QTY.
1	DD2-ESC-RING	1
2	DD2-ESC	1
3	SX-CRSS-HNDL	1
4	TR24-STEM	1
5	AS568 - 012	1
6	.497x.391x.02-PLSTC-WSHR	1
7	CR-FHMS 0.164-32x1.25x1.25-S	1



Harmonie (Code: H4)



ITEM NO.	PART NUMBER	QTY.
1	H4-ESC	1
2	BB6-LVR-INSRT	1
5	A-POST-CAP	1
8	CR-FHM1 0.164-32x0.5x0.5-S	1



Specification from Finished Wall to Tip of Broach Stem

HANDLE TRIM #	MEASUREMENT (IN.)
B9	2 1/8
DD2/ DD3	1 7/8
H4	2 1/4

Note: When fitting handle it may be necessary to shorten broach stem and/or threaded nipple to eliminate gap between handle and escutcheon

IMPORTANT INSTALLATION INFORMATION

- USE TEFLON TAPE OR PIPE SEALANT FOR THREADED CONNECTIONS
- DO NOT USE PLUMBER'S PUTTY ON ANY OF THE BRASS COMPONENTS
This will cause the finish to tarnish and void the warranty. A non-corrosive Alkoxy Silicone is recommended.
- DURING SWEATING OF LINES DO NOT OVERHEAT CASTING
Overheating may cause damage to internal mechanism
- COPPER ADAPTORS MAY BE REQUIRED TO COMPLETE YOUR INSTALLATION

For technical support, please call 718-257-2800