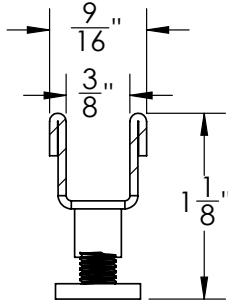


SLOT Specifications



SLOT:

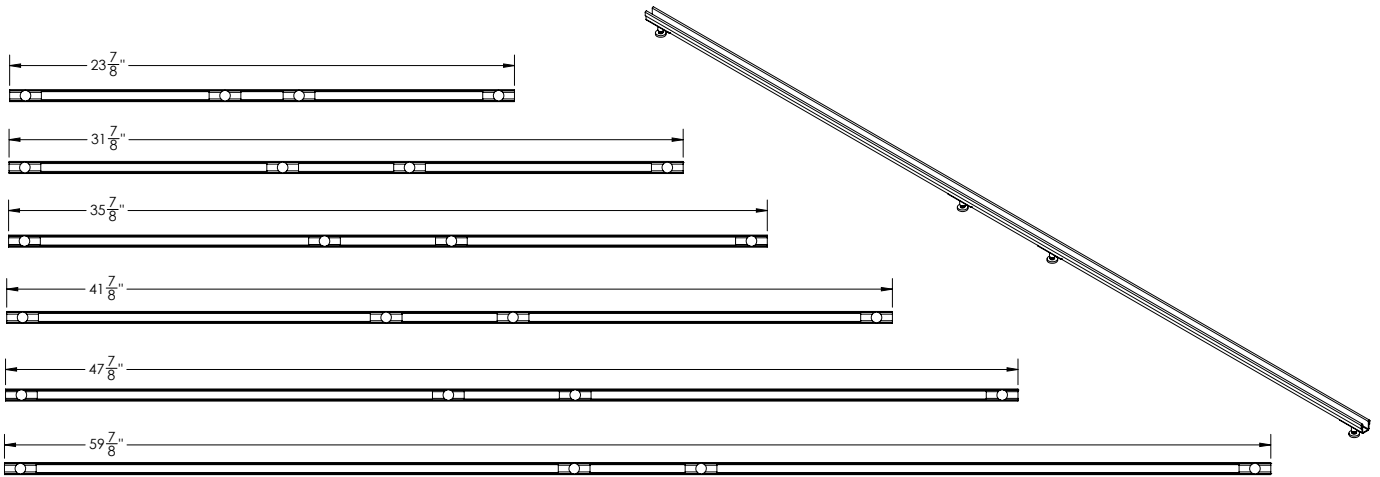
- Slot insert for FFST, FCSST, FCBST
- 16 gauge, 304L stainless steel

Models (overall dimensions):

- SLOT 6524: 23 7/8" L x 9/16" W x 1 1/8" H
- SLOT 6532: 31 7/8" L x 9/16" W x 1 1/8" H
- SLOT 6536: 35 7/8" L x 9/16" W x 1 1/8" H
- SLOT 6542: 41 7/8" L x 9/16" W x 1 1/8" H
- SLOT 6548: 47 7/8" L x 9/16" W x 1 1/8" H
- SLOT 6560: 59 7/8" L x 9/16" W x 1 1/8" H

Finishes:

- Satin Stainless - SS
- Polished Stainless - PS
- Satin Bronze - SB
- Oil Rubbed Bronze - ORB
- Matte Black - BK



Infinity Drain
145 Dixon Avenue
Amityville, NY 11701
Phone: 516.767.6786
Fax: 516.740.3066
www.infinitydrain.com



NOTE: Installer must verify all rough-in dimensions prior to installation and consult local and national codes. Conformity and compliance to local and national codes are the responsibility of the installer.