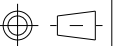
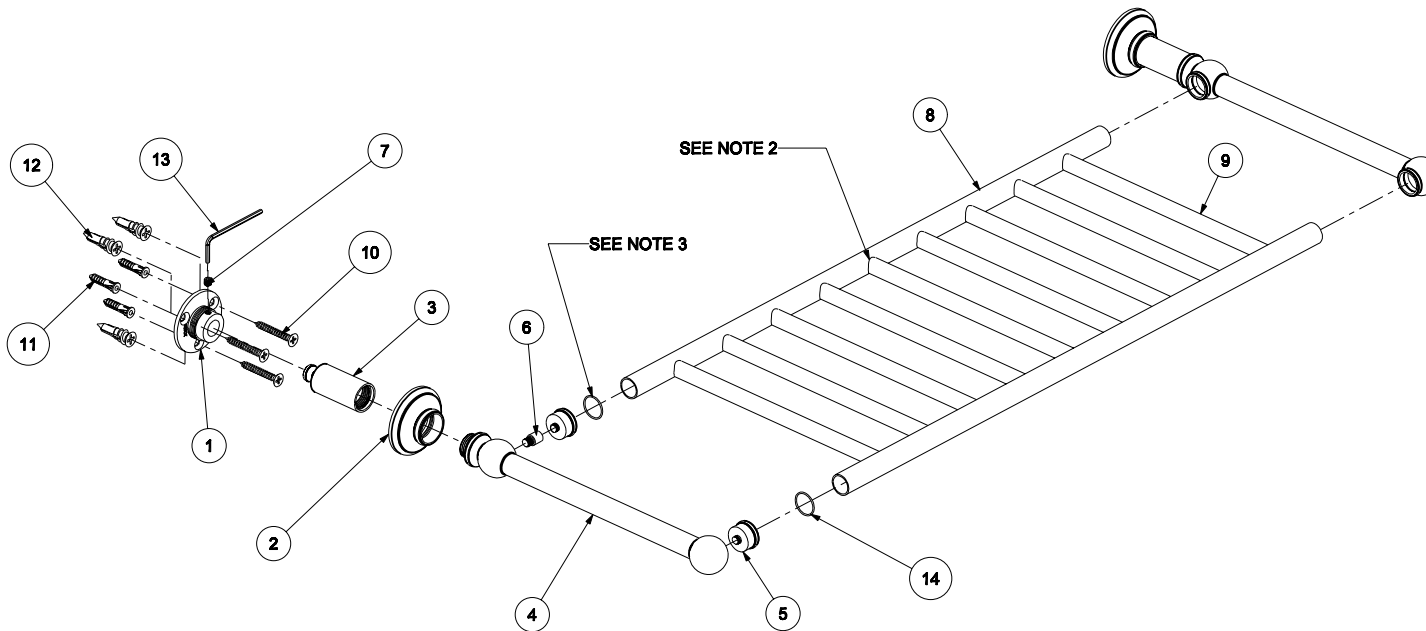


**ASSEMBLY NOTES:**

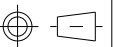
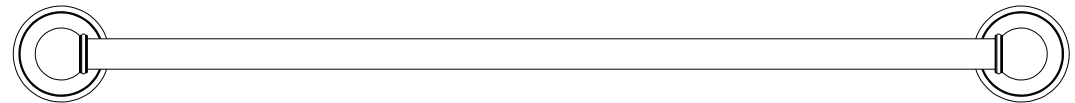
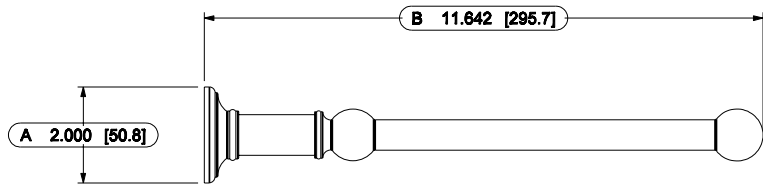
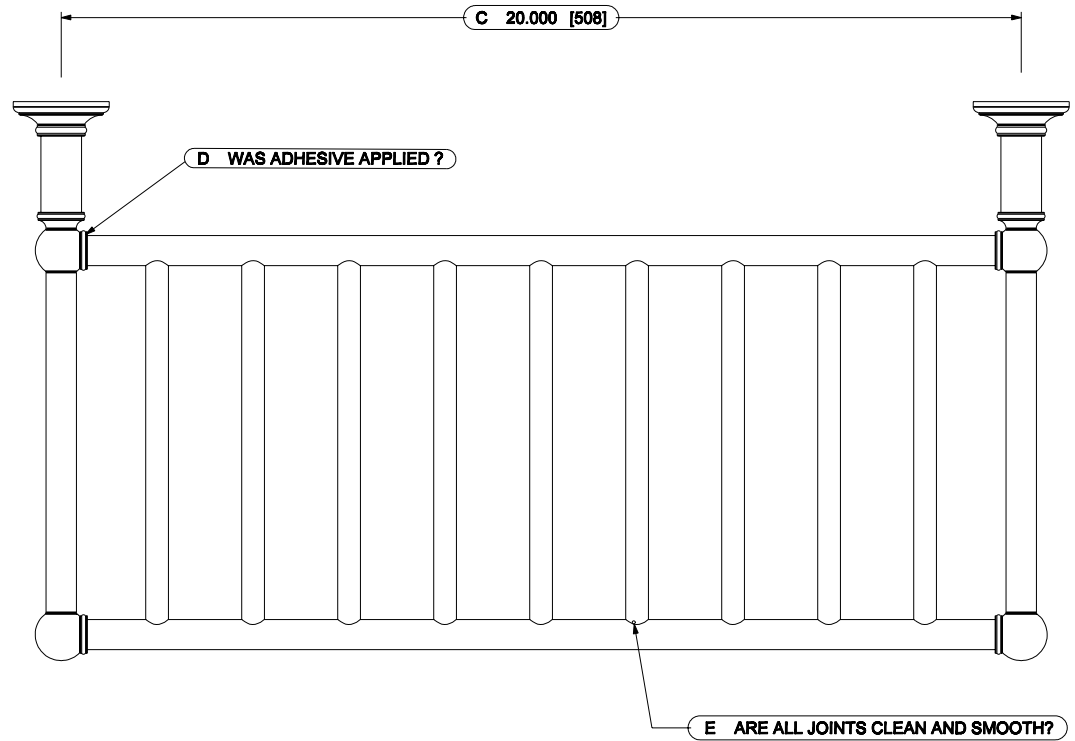
1. USE PERMANENT THREADLOCKER (LOCTITE 262 OR EQUIVALENT) ON ITEMS 3, 5 AND 6.
2. SILVER SOLDER ASSEMBLED JOINTS AND POLISH SMOOTH.
3. DURING FINAL ASSEMBLY: APPLY THIN LAYER OF (LOCTITE 404) AFTER O-RINGS ARE INSTALLED AND JUST BEFORE THE BAR.

**BILL OF MATERIAL**

ITEM	PT/ASSY	DESCRIPTION	TYPE	QTY.	DWG.NO.
1	454B	MOUNTING FLANGE	PART	2	HTL-049
2	4500	ROSETTE	PART	2	45A-003
3	4540SP	HOTEL SHELF POST	PART	2	HTL-050
4	4540LP	HOTEL SHELF POST (LONG)	PART	2	HTL-052
5	4550F	POST FLANGE	PART	4	45A-005
6	4540-43ADP	THREAD EXTENSION	PART	2	HTL-051
7	SM5-5S	M5 x5 STAINLESS STEEL SET SCREW	PART	2	-
8	454020	SIDE TUBE	PART	2	HTL-053
9	45408	CROSS TUBE	PART	9	HTL-054
10	10_1-5_PFS	No. 10 x 1-1/2" P H S.S. SELF TAPPING	PART	6	-
11	GCA	NO. 8 -10 WALL ANCHOR PLASTIC	PART	6	-
12	SSPM	DRYWALL ANCHOR	PART	6	-
13	M2_5HK	2.5MM ALLOY STEEL HEX KEY	PART	1	-
14	RM16-1	16mm x 1mm BUNA-N- O-RING	PART	4	-

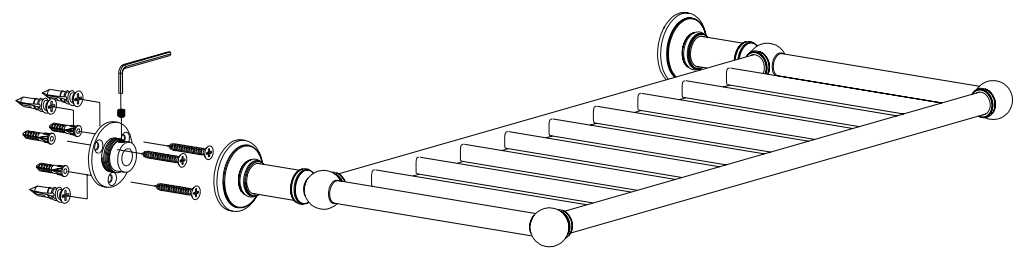
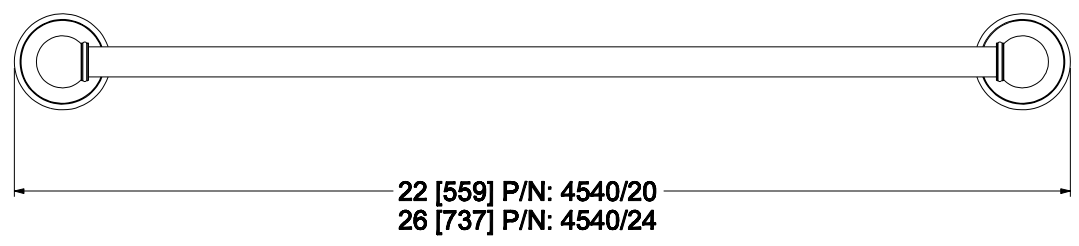
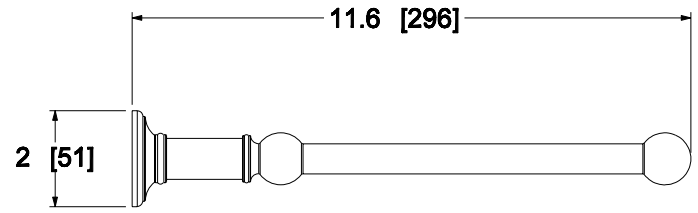
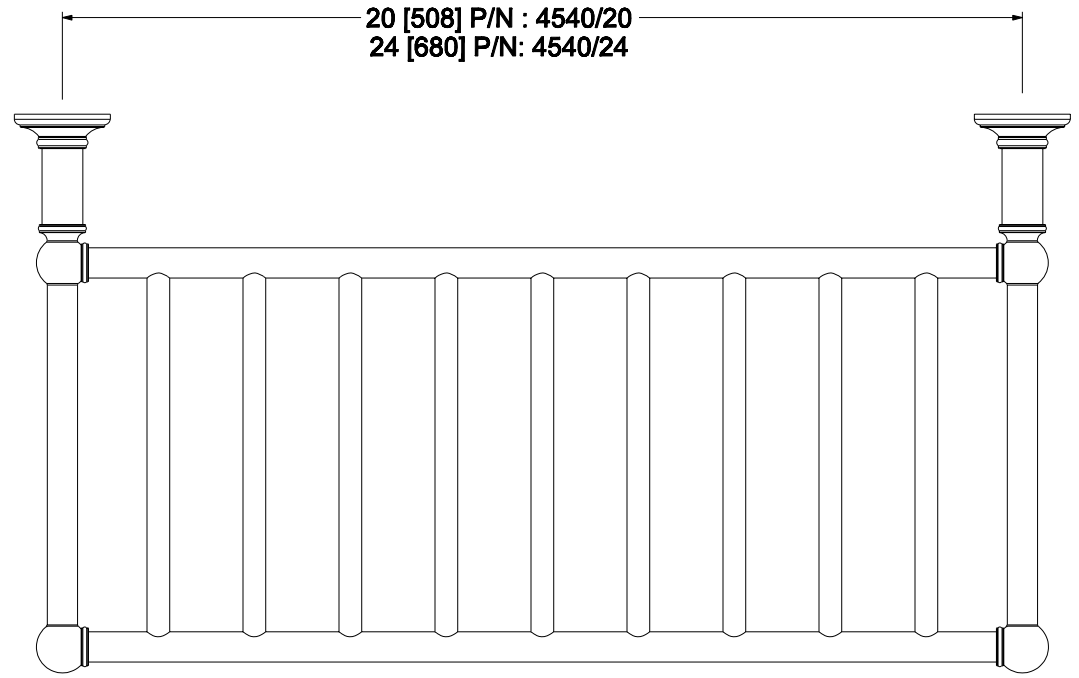


FINISHES:AGD- ANTIQUE GOLD, AS- ANTIQUE SILVER, 10B- OIL RUBBED BRONZE,14- POLISHED NICKEL, 15- SATIN NICKEL, 26 POLISHED CHROME					<b>GINGER</b>
MATERIAL: VARIOUS BRASSES AND STAINLESS STEEL MOUNTING HARDWARE					
PART NO. 4540-20		<b>20" COLUMNAR HOTEL SHELF</b>			
DATE:11.27.06	REV.DATE: 4.3.07	REV.B	SCALE 3:16	COLUMNAR	DWG.NO. 4540-20



FINISHES:AGD- ANTIQUE GOLD, AS- ANTIQUE SILVER, 10B- OIL RUBBED BRONZE,14- POLISHED NICKEL, 15- SATIN NICKEL, 26 POLISHED CHROME				
MATERIAL: VARIOUS BRASSES AND STAINLESS STEEL MOUNTING HARDWARE				
PART NO.	4540-20	20" COLUMNAR HOTEL SHELF		
DATE:11.27.06	REV.DATE: 4.3.07	REV.B	SCALE 1:4	COLUMNAR

GINGER  
DWG.NO.  
4540-20



FINISHES: 01- ANTIQUE GOLD, 02- ANTIQUE SILVER, 03- OIL RUBBED BRONZE, 04- POLISHED NICKEL, 05- SATIN NICKEL, 06 POLISHED CHROME		UNIT: INCH [MM]	GINGER
MATERIAL: VARIOUS BRASSES, STAINLESS STEEL MOUNTING HARDWARE		WEIGHT: 4LBS. 1 OZ. [ 1.8 KG.]	
PART NO. 4540/20 - 4540/24	HOTEL SHELF		DWG. NO.
DATE: 4.19.07	REV. DATE:	SCALE 1:4	COLUMNAR PD-4540

