



Bathtub - TARA

Wall mounted two-way diverter - Brushed brass (23kt gold)

Article number: 36 200 882-28 0010

Date of manufacture from 4/1/2022

- Manual diverter
- Flange 2-3/8"
- with integrated shut-off
- (ADA)

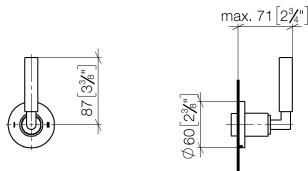


Brushed brass (23kt gold)

Accessory is required for this item.

Dimensional drawing

mm [inches]

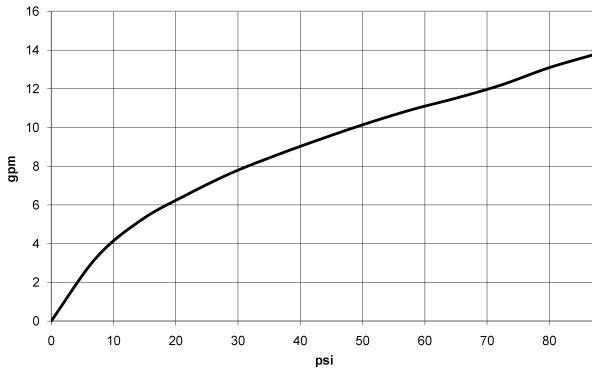


All dimensions in mm / inch = mm x 0,0394



Bathtub - TARA
Wall mounted two-way diverter - Brushed brass (23kt gold)
Article number: 36 200 882-28 0010
Date of manufacture from 4/1/2022

Flow rate chart





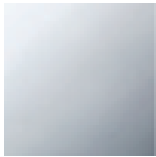
Bathtub - TARA

Wall mounted two-way diverter - Brushed brass (23kt gold)

Article number: 36 200 882-28 0010

Date of manufacture from 4/1/2022

Other surface finishes



Chrome

36 200 882-00 0010



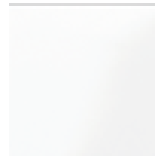
Brushed Platinum

36 200 882-06 0010



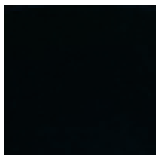
Platinum

36 200 882-08 0010



White matte

36 200 882-10 0010



Black matte

36 200 882-33 0010



Brushed champagne (22kt gold)

36 200 882-46 0010



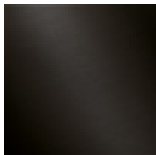
Champagne (22kt Gold)

36 200 882-47 0010



Brushed Chrome

36 200 882-93 0010



Brushed Dark Platinum

36 200 882-99 0010

More custom finish options are available via special production (xTra Service). See our finish matrix for availability and pricing or contact a Dornbracht representative. Some series may be excluded and some finishes may not be available in all series.



Bathtub - TARA

Wall mounted two-way diverter - Brushed brass (23kt gold)

Article number: 36 200 882-28 0010

Date of manufacture from 4/1/2022

NO IMAGE

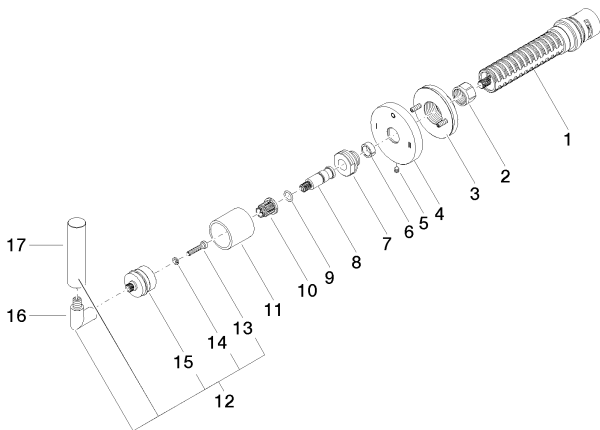


AVAILABLE

35 202 970-90 0010

Wall mounted two-way
diverter -

Spare parts list



Number	Item Number	Designation	Number of units
1	90 90 03 306 10 90	diverter	1
2	09 23 30 023 90	nut	1
3	90 21 02 181 00 90	disc	1
4	09 27 89 120-28	rosette	1
5	09 31 11 294 90	pin	1
6	09 14 15 020 90	ring	1
7	09 24 05 002 90	nipple	1
8	09 29 06 022 90	spindle	1
9	09 14 10 060 90	seal	1
10	90 12 12 002 00 90	fixing cap	1
11	09 21 02 144-28	sleeve	1
12	04 20 88 052 10-28	handle	1
13	09 30 30 075 90	screw	1
14	09 30 11 029 90	disc	1
15	90 12 12 219 00-28	base	1
16	04 18 20 022 00-28	angle	1
17	09 20 88 052-28	handle	1